

LAND HEADQUARTERS CO

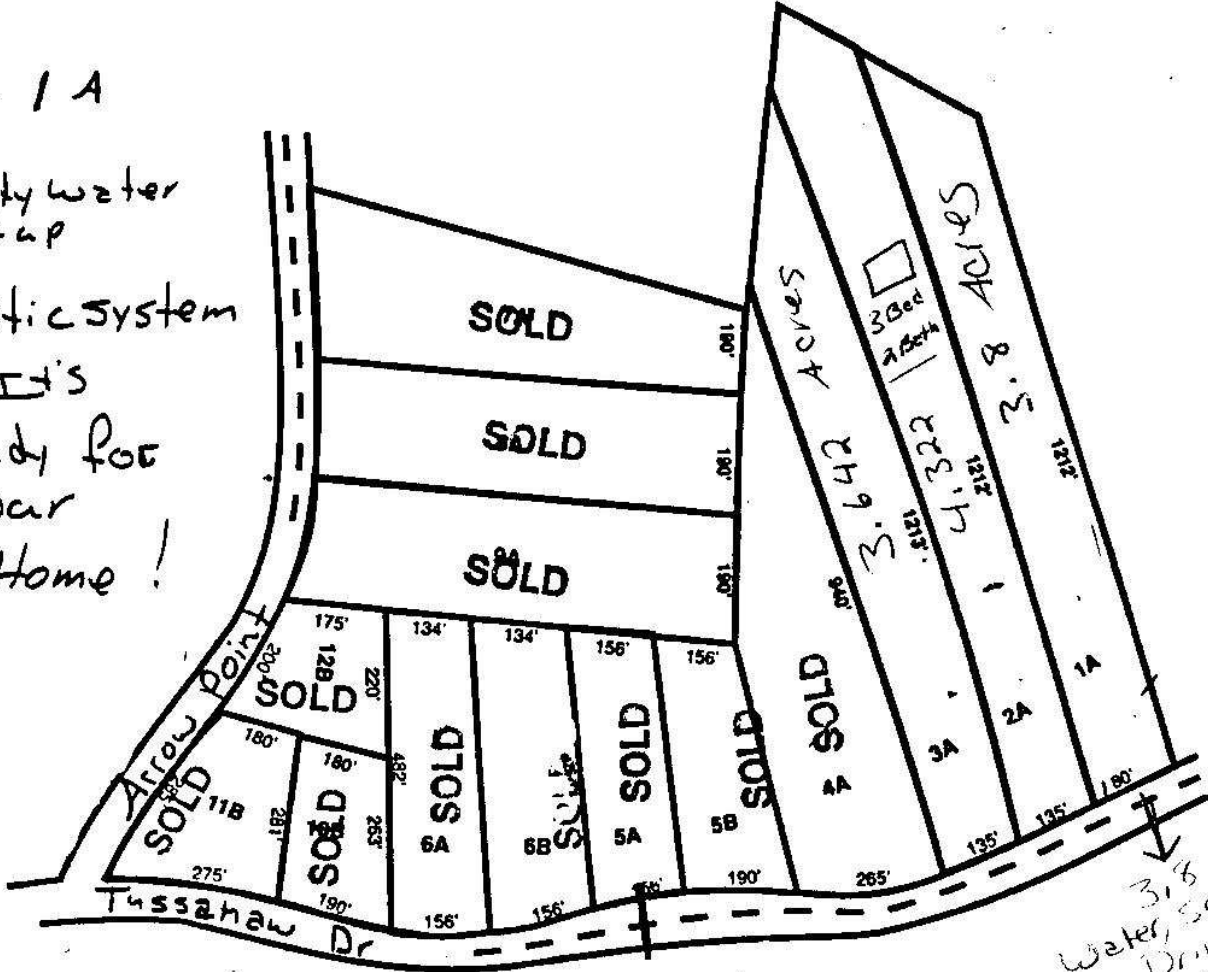
DIVISION OF SOMMA INVESTMENTS, INC.

P.O. BOX 793 GRIFFIN, GA 30224

ARROW POINT ACRES

BUTTS COUNTY

Lot 1 A
has
County water
Hook up
+
septic system
It's
Ready for
your
Home!



Ready for your home or doublewide!

NEAR BEAUTIFUL LAKE JACKSON

Land Headquarters 1-A, 2A, 3A, 4A, 7A, 8A, 9-A
SanJeev Chainani Trust 5-A, 5-B
Somma Investmens Co. Inc. 1-B, 2-B, 3-B
Sheila Chainani 6 - , 6-B

FROM ATLANTA
Take I-75 south to exit #67 go east into Jackson then turn left onto Hwy 36 across from the Burger King. Go over the railroad tracks & turn immediately to the right. Go past Harolds Propane several miles to the 4-way stop at Stark Supperette. Continue straight and take the left fork in the road at the building which says Stark, GA. Turn left at Barnett Bridge Road and pass Kerseys Boat Landing. Take the next paved road and then the next paved road to the right where you will see our signs. (corner of Arrow Point &

PHONE 227-7227