

# LAND HEADQUARTERS Co



...Where Country Living Begins...

For more information on this Property or others that we have Please Call:

770-227-7227

or

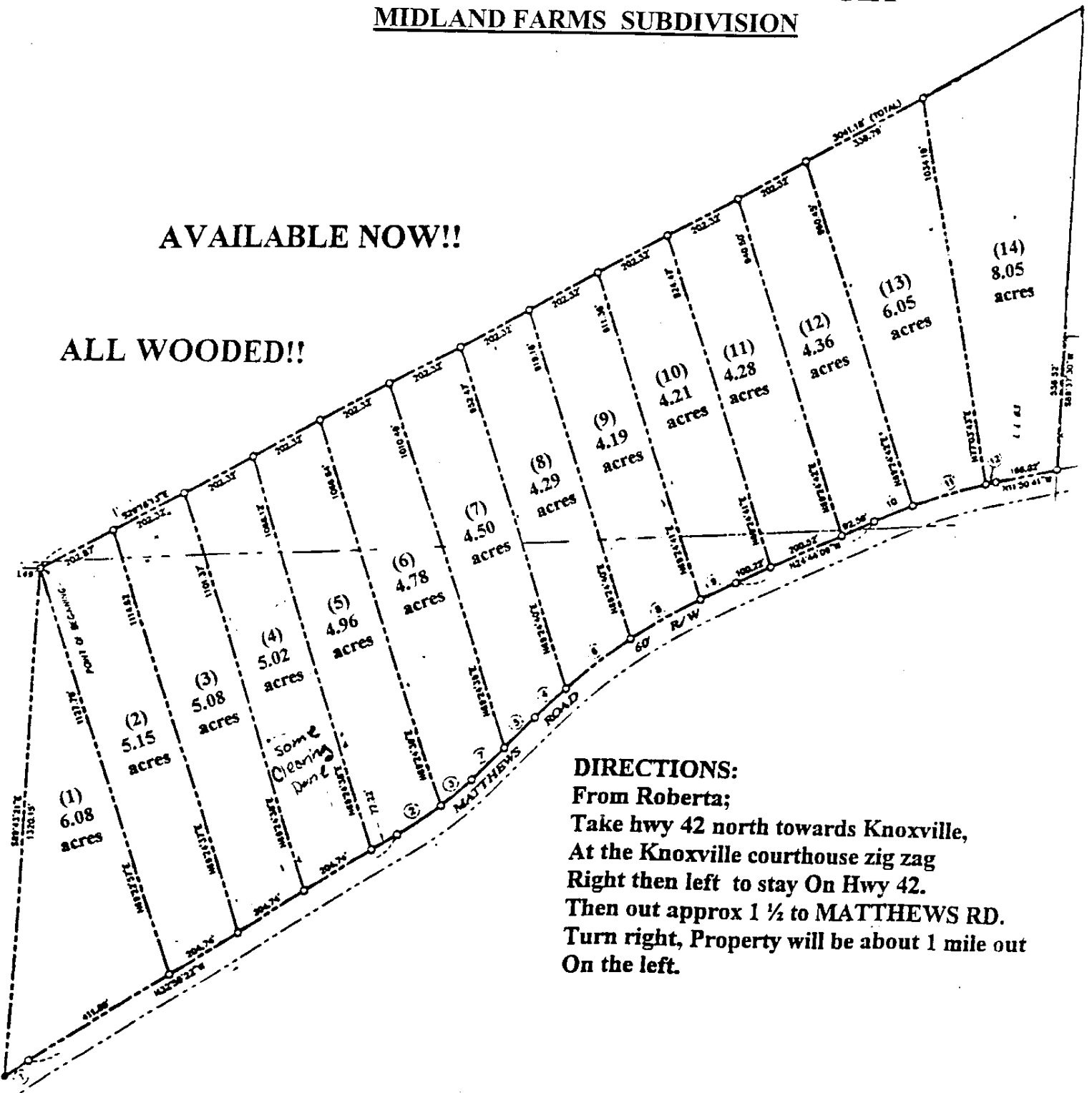
1-800-464-9199

1415 W. McIntosh Rd. Griffin, GA 30223

## CRAWFORD COUNTY -- GEORGIA MIDLAND FARMS SUBDIVISION

AVAILABLE NOW!!

ALL WOODED!!



**DIRECTIONS:**  
 From Roberta;  
 Take hwy 42 north towards Knoxville,  
 At the Knoxville courthouse zig zag  
 Right then left to stay On Hwy 42.  
 Then out approx 1 1/2 to MATTHEWS RD.  
 Turn right, Property will be about 1 mile out  
 On the left.