



...Where Country Living Begins...

For more information on this Property
or others that we have Please Call:

770-227-7227

or

1-800-464-9199

1415 W. McIntosh Rd. Griffin, GA 30223

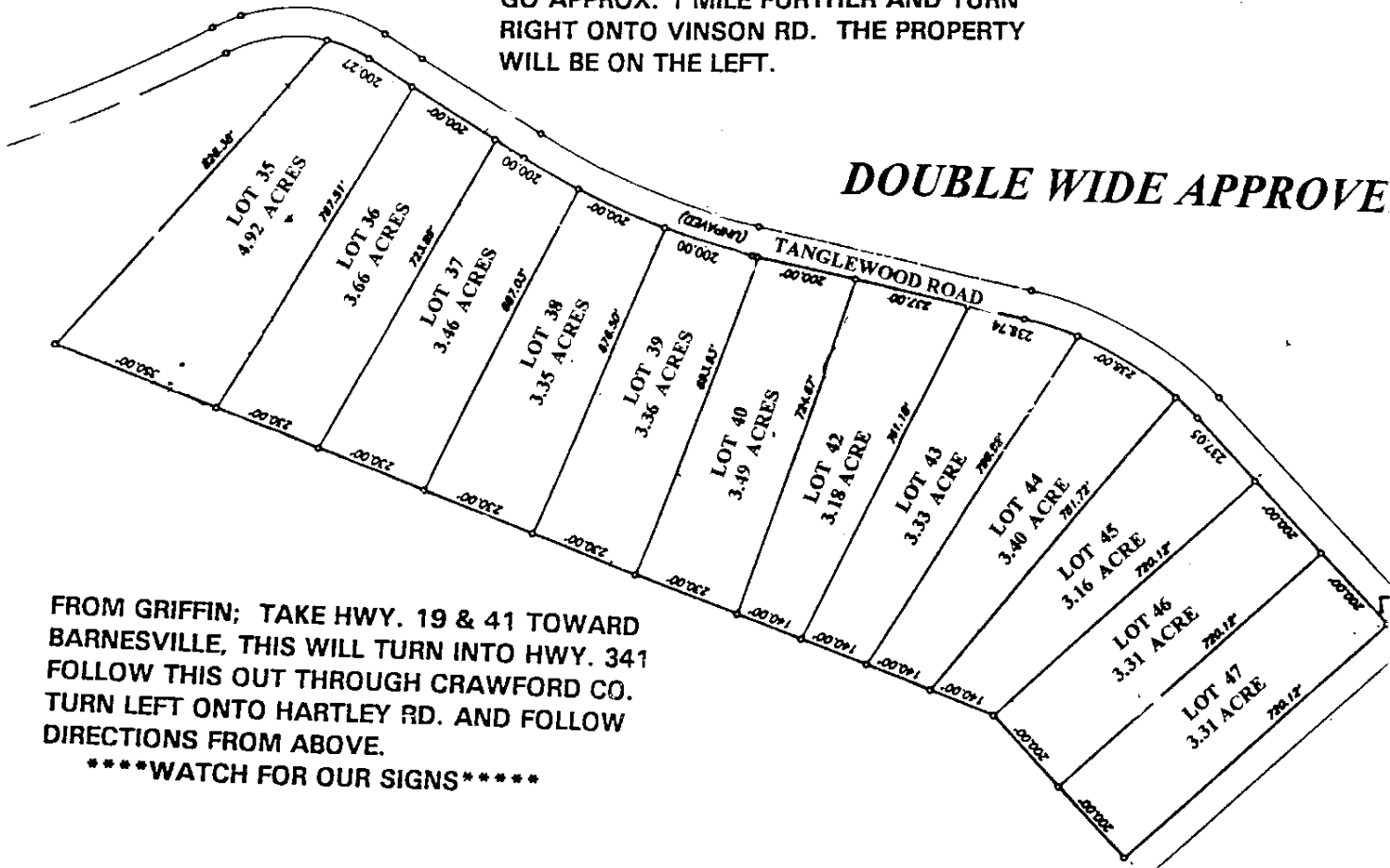
CRAWFORD COUNTY -- GEORGIA
SHAW FARMS SUBDIVISION

PASTURE LAND

DIRECTIONS: FROM FORT VALLEY:
TRAVEL NORTH ON HWY. 341 GO OUT
APPROX. 1 MILE THEN TAKE THE FIRST
RIGHT ONTO HARTLEY RD. AFTER YOU
CROSS THE GA. HWY. 49 CONNECTOR,
GO APPROX. 1 MILE FURTHER AND TURN
RIGHT ONTO VINSON RD. THE PROPERTY
WILL BE ON THE LEFT.

**WIDE
OPEN
SPACE!!**

DOUBLE WIDE APPROVE



FROM GRIFFIN; TAKE HWY. 19 & 41 TOWARD
BARNESVILLE, THIS WILL TURN INTO HWY. 341
FOLLOW THIS OUT THROUGH CRAWFORD CO.
TURN LEFT ONTO HARTLEY RD. AND FOLLOW
DIRECTIONS FROM ABOVE.

*****WATCH FOR OUR SIGNS*****