



...Where Country Living Begins...

For more information on this Property
or others that we have Please Call:

770-227-7227

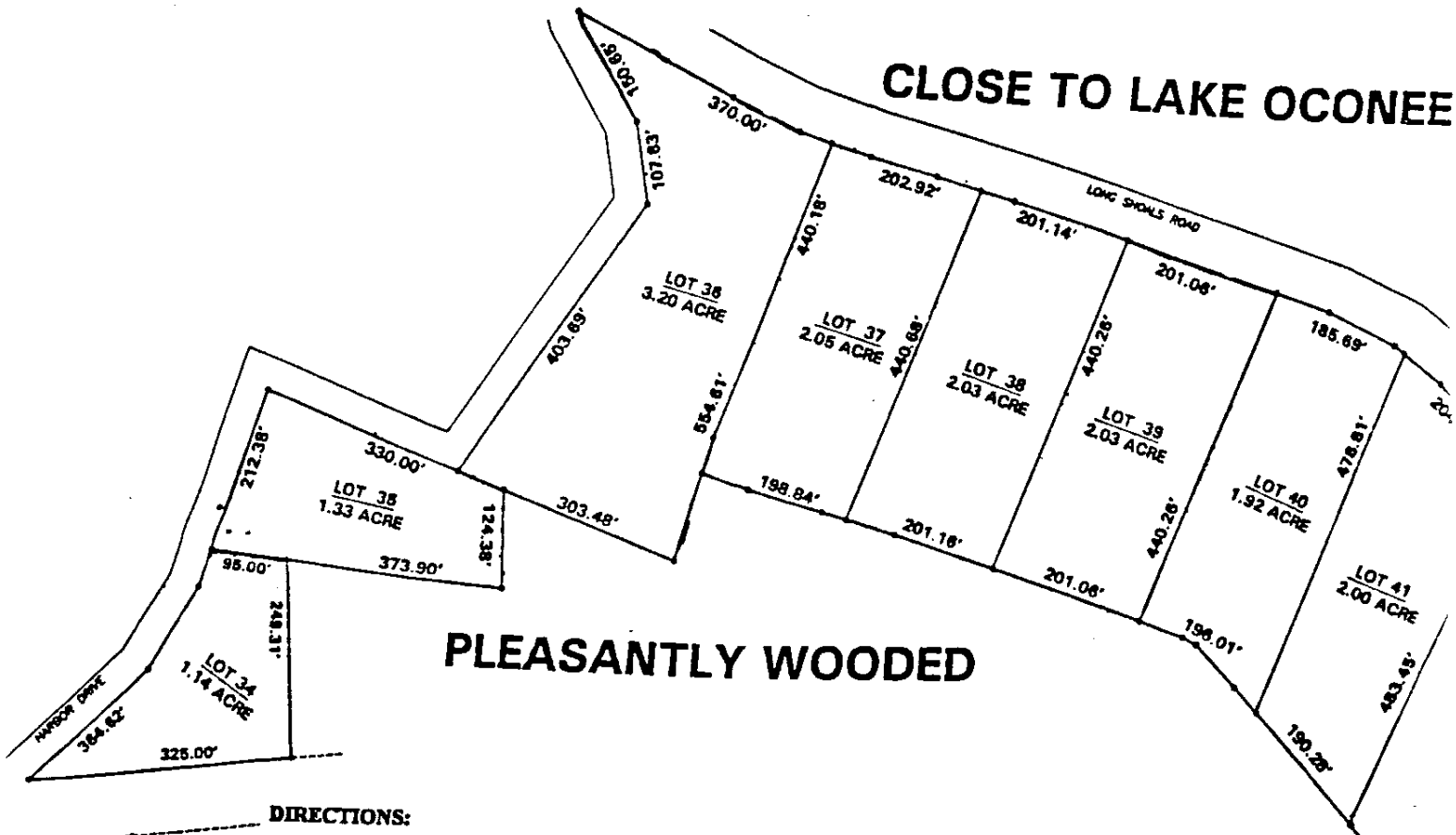
or

1-800-464-9199

1415 W. McIntosh Rd. Griffin, GA 30223

PUTNAM COUNTY -- GEORGIA
WHISPERING PINES OF LAKE OCONEE SUBDIVISION

PAGE 2



CLOSE TO LAKE OCONEE

PLEASANTLY WOODED

DIRECTIONS:

FROM I-75; TAKE EXIT 205
 (THIS IS HWY. 16) GO STRAIGHT
 THRU JACKSON AND DOWN THRU
 EATONTON ABOUT 6 1/2 MILES PAST
 EATONTON TURN LEFT ONTO LONG
 SHOALS RD. FOLLOW THIS OUT APPROX.
 2 1/2 MILES TO HARBOR DR. THE PROPERTY
 WILL BE ON THE LEFT OF HARBOR DR. AND
 ON THE RIGHT OF LONG SHOALS RD.

FROM I-20:
 TAKE EXIT 53 (HWY 44) TOWARDS
 EATONTON GO IN APPROX 6 MILES
 WATCH FOR THE PYRAMID AND TURN
 LEFT ON TO OLD PHOENIX RD. GO APPROX.
 5 MILES TO DEAD END ON HWY. 16 TURN LEFT
 AND GO OUT APPROX. 3 1/2 MILES TO LONG SHOALS
 RD. TURN LEFT AND GO OUT APPROX. 2 1/2 MILES
 TO HARBOR DR. PROPERTY STARTS AT THIS
 INTERSECTION.

